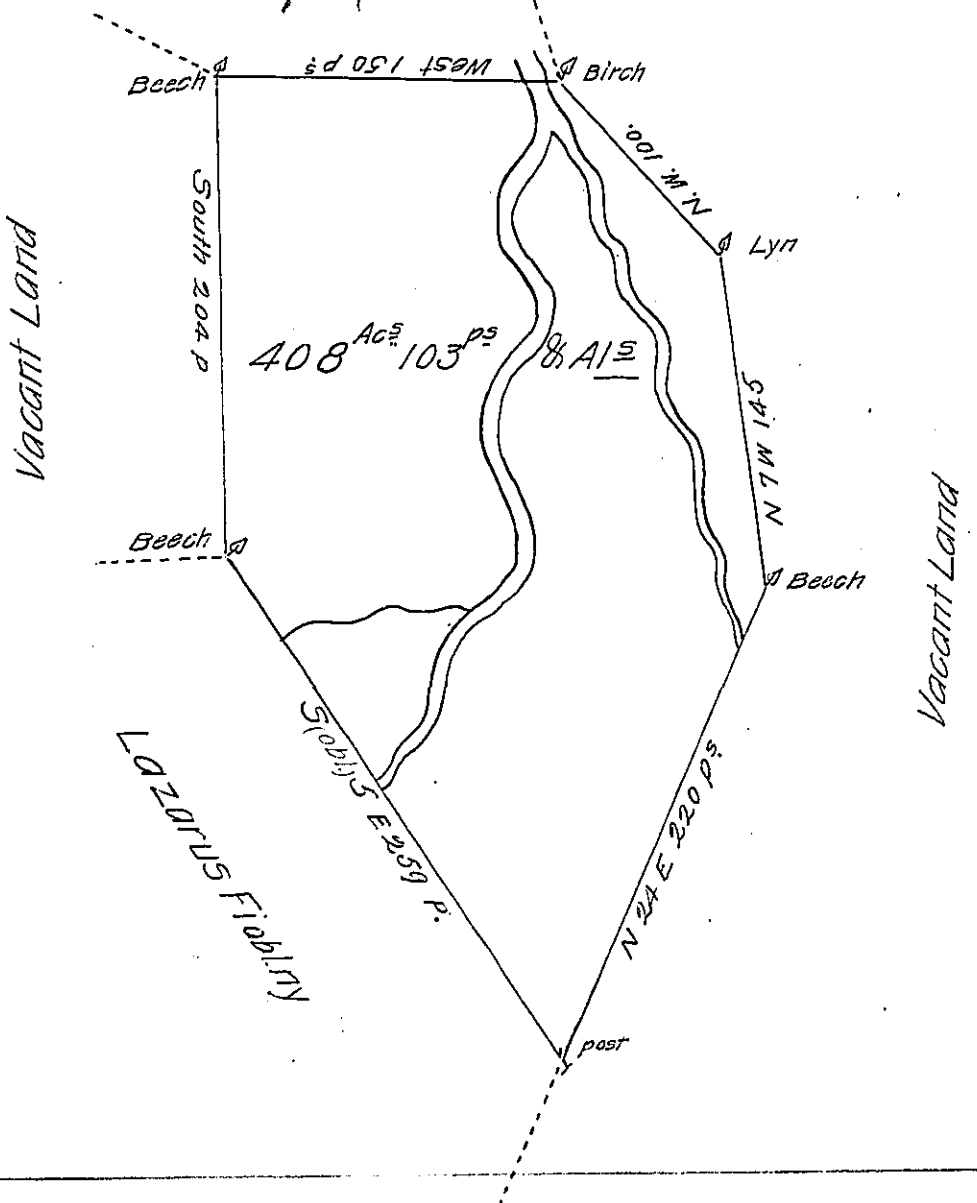


Thomas Baude  
C. 17. 7



By Virtue of a Warrant Dated 1<sup>st</sup> of July 1784 Surveyed the 28<sup>th</sup> of July  
 1785 Unto Robert Finny the above described Tract of Four hundred and  
 eight Acres and 103 perches of Land and the usual Allowance of Six Acres  
 pr. Cent. Situated adjoining Land surveyed for Thomas Baude & Lazarus  
 Finny on Bowmans Creek in North<sup>bd</sup> County

By W<sup>m</sup> Montgomery D.S.

To John Lukens Esq<sup>r</sup> }  
 Surveyor General

Now Luzerne County

IN TESTIMONY that the above is a copy of the original remaining on file in  
 the Department of Internal Affairs of Pennsylvania, made  
 conformably to an Act of Assembly approved the 16th day of  
 February, 1833, I have hereunto set my Hand and caused  
 the Seal of said Department to be affixed at Harrisburg,  
 this twentyfirst day of October 1904.

*Anne B. Brown*  
 Secretary of Internal Affairs.